

# SOLENOID VALVE - G1/4

## J Series

Cat No J013MA - 01 - A

### 2 / 2 Direct acting normally closed valve (with manual operator)

#### Features

- ❑ Wide range of coil voltages
- ❑ Continuous duty cycle
- ❑ Low temperature of operation
- ❑ Noiseless performance
- ❑ Coil can be rotated by 360°
- ❑ Manual operator (Screw & Knob type)



#### Technical Specifications

Model #	E22613	E22612	E22611
Port size	Inlet, Outlet - G1/4		
Medium	Filtered compressed air		
Ambient temperature	-10° to +60° C		
Medium temperature	+5° to +50° C		
Orifice (NW)	2.5	2	1.2
Operating pressure (bar)	0 - 7	0 - 10	0 - 20
Flow rate (lpm) *	180	140	60
<b>Electrical</b>			
Coil width	32 mm		
Voltage (V) ± 10%	AC ( 50 Hz )		DC
	24, 48, 110, 220	12	24, 48, 110
Power consumption (Watts)	6	9	8
Duty cycle	Continuous		
Type of coil protection	IP65		
Class of insulation	Class F		
Materials of construction	Aluminium, Brass, Stainless steel, Nitrile		

# For ordering refer page no. 3.1.1

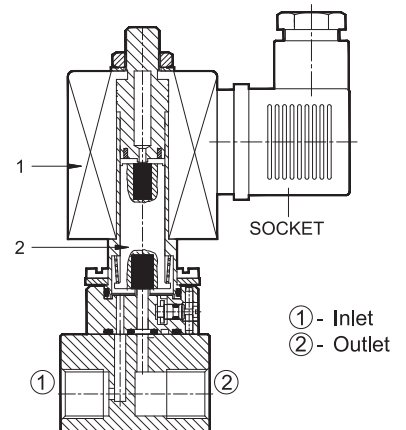
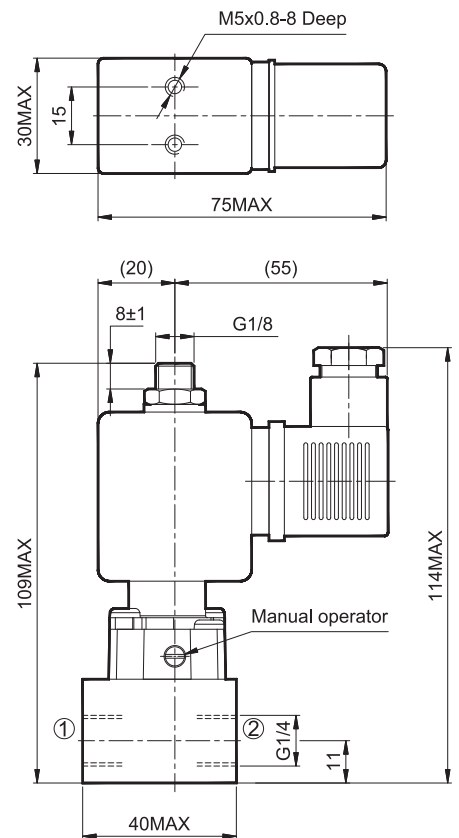
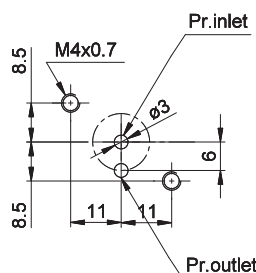
\* at 6 bar inlet, 5 bar outlet, with pressure drop  $\Delta p = 1$  bar

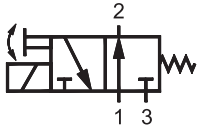
#### Spare parts list

Ref. No.	Coil ( without socket )	Ordering no. for	
		AC 50Hz	DC
1	220	AC11A	- NA -
	110	AC11B	DC12Q
	48	AC11D	DC12S
	24	AC11G	DC12W
	12	- NA -	DC15R
2	<b>Moving core sub assembly complete</b> consists of 1. moving core subassembly 2. main spring	SSA0311-H	SSA0711-H

#### Caution:

A.C coil should not be used on a D.C coil valve, and vice versa.





# SOLENOID VALVE - G1/4

## J Series

Cat No J002MA - 04 - A

### 3 / 2 Direct acting normally open valve (with manual operator)

#### Features

- ❑ Wide range of coil voltages
- ❑ Continuous duty cycle
- ❑ Low temperature of operation
- ❑ Noiseless performance
- ❑ Coil can be rotated by 360°
- ❑ Manual operator (Screw & Knob type)



#### Technical Specifications

Model #	E23613	E23612	E23611
Port size	Inlet - G1/8, Outlet, Exhaust - G1/4		
Medium	Filtered compressed air		
Ambient temperature	-10° to +60° C		
Medium temperature	+5° to +50° C		
Orifice (NW)	2.5	2	1.2
Operating pressure (bar)	0 - 7	0 - 10	0 - 20
Flow rate (lpm) *	180	140	60
<b>Electrical</b>			
Coil width	32 mm		
Voltage (V) ± 10%	AC ( 50 Hz ) 24, 48, 110, 220		
Power consumption (Watts)	6		
Duty cycle	Continuous		
Type of coil protection	IP65		
Class of insulation	Class F		
Materials of construction	Aluminium, Brass, Stainless steel, Nitrile		

# For ordering refer page no. 3.1.1

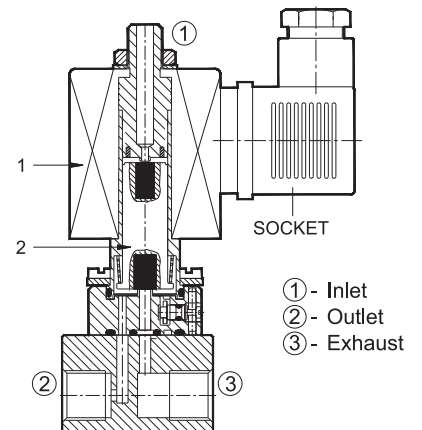
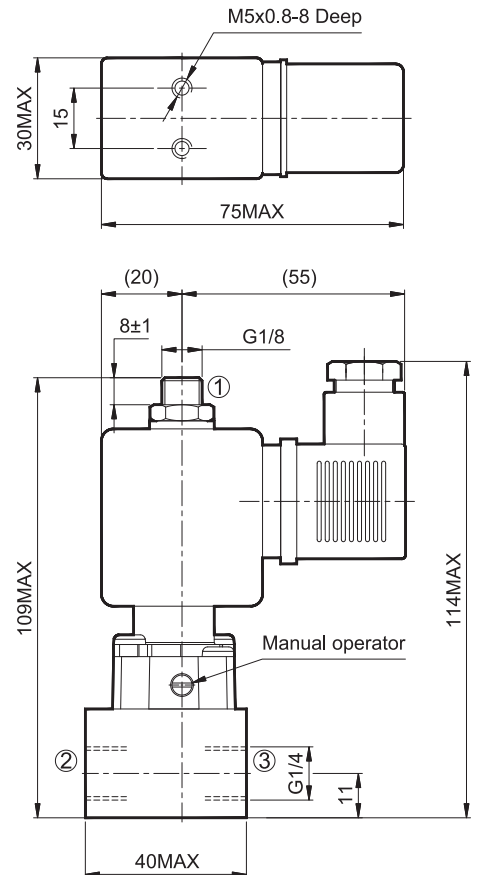
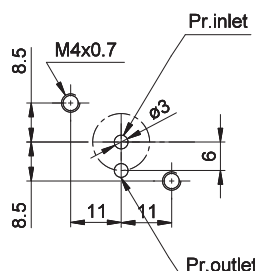
\* at 6 bar inlet, 5 bar outlet, with pressure drop  $\Delta p = 1$  bar

#### Spare parts list

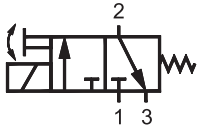
Ref. No.	Coil ( without socket )		Ordering no. for
	Voltage	AC 50Hz	
1	220	AC11A	SSA0411-H
	110	AC11B	
	48	AC11D	
	24	AC11G	
	12	- NA -	
2	<b>Moving core sub assembly complete</b> consists of 1. moving core subassembly 2. main spring		

#### Caution:

A.C coil should not be used on a D.C coil valve, and vice versa.



- ① - Inlet
- ② - Outlet
- ③ - Exhaust



# SOLENOID VALVE - G1/4

## J Series

Cat No J003MA - 04 - A

### 3 / 2 Direct acting normally closed valve (with manual operator)

#### Features

- Wide range of coil voltages
- Continuous duty cycle
- Low temperature of operation
- Noiseless performance
- Coil can be rotated by 360°
- Manual operator (Screw & Knob type)



#### Technical Specifications

Model #	E24613	E24612	E24611
Port size	Inlet, Outlet - G1/4, Exhaust - G1/8		
Medium	Filtered compressed air		
Ambient temperature	-10° to +60° C		
Medium temperature	+5° to +50° C		
Orifice (NW)	2.5	2	1.2
Operating pressure (bar)	0 - 7	0 - 10	0 - 20
Flow rate (lpm) *	180	140	60
<b>Electrical</b>			
Coil width	32 mm		
Voltage (V) ± 10%	AC ( 50 Hz )		DC
	24, 48, 110, 220	12	24, 48, 110
Power consumption (Watts)	6	9	8
Duty cycle	Continuous		
Type of coil protection	IP65		
Class of insulation	Class F		
Materials of construction	Aluminium, Brass, Stainless steel, Nitrile		

# For ordering refer page no. 3.1.1

\* at 6 bar inlet, 5 bar outlet, with pressure drop  $\Delta p = 1$  bar

#### Spare parts list

Ref. No.	Coil ( without socket )	Ordering no. for	
	Voltage	AC 50Hz	DC
1	220	AC11A	- NA -
	110	AC11B	DC12Q
	48	AC11D	DC12S
	24	AC11G	DC12W
	12	- NA -	DC15R
2	<b>Moving core sub assembly complete</b> consists of 1. moving core subassembly 2. main spring	SSA0311-H	SSA0711-H

#### Caution:

A.C coil should not be used on a D.C coil valve, and vice versa.

